

DISTRICT 14



John C. "Jay" Morris
State Representative

DISTRICT PROFILE



1594
MILES



77
BRIDGES



4
AIRPORTS



1
PORTS

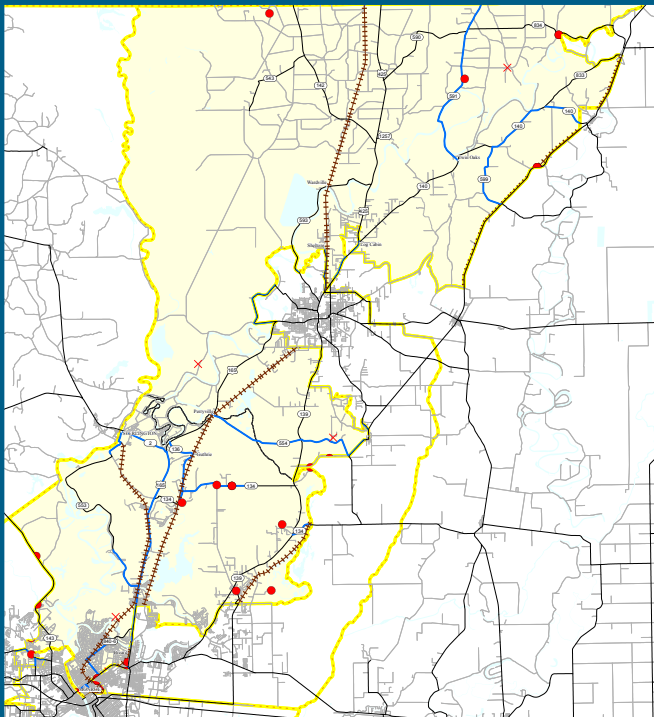
DISTRICT NEEDS

132 MILES
OF ROADWAY NEED REPAIR

11 BRIDGES
NEED REPAIR OR REPLACEMENT

→ \$88 M DISTRICT NEEDS TOTAL

PROJECTS MAP



LEGEND

- ✕ Closed Bridges
- Deficient Bridges
- Roadway in Need of Repair

FY17-18 Project Improvements with Increased Funding

LA 134 Improvements at US 165	Pre-Construction
US 165 Overlay: South LA 599 to North LA 599	\$1,220,000

Megaprojects

I-20 Widening: LA 546 to LA 594	\$220,000,000
Ouachita River Bridge	\$350,000,000
US 84 Widening: Archie to Ferriday	\$85,000,000

BENCHMARKING LOUISIANA

\$13.1B
BACKLOG



44TH
lowest gas tax in the
United States



50TH
ranked state in overall
transportation investment

THE NEED IS GREAT

The needs are well-documented and indisputable. Louisiana is on the wrong end of most lists concerning infrastructure investment and the impact is severe. Louisiana citizens pay some of the highest automobile insurance rates and significantly more for automobile repairs than our southern neighbors due to a lack of resources to address critical rehabilitation of our existing system. The congestion and backlog continues to grow. Due to the lack of investment, our citizens and visitors waste time and fuel sitting in traffic resulting in reduced productivity and quality of life. There has not been an increase in state fuel tax revenues since 1989, resulting in a 56% reduction in buying power from inflation alone. The trend must be reversed.

THE TIME IS NOW

**FUNDING
THE PLAN**

\$700M
(annual program increase)



\$20/mo
(1000 gallons/year)